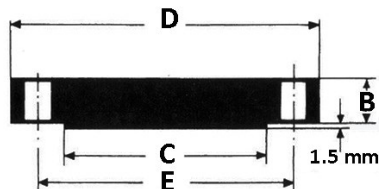


## BLINDFLENS - ASTM A182 / ANSI B16.5



Artikelcode	Afmeting	A	B	C	D	E	Kwaliteit
43021-10419	1/2" - 300 LBS		12.7	34.9	95	66.7 (4x ø15.88)	304/L - 1.4301/7
43021-7824	1/2" - 300 LBS		12.7	34.9	95	66.7 (4x ø15.88)	316/L - 1.4401/4
43021-10420	3/4" - 300 LBS		14.3	42.9	117	82.6 (4x ø19.05)	304/L - 1.4301/7
43021-5511	3/4" - 300 LBS		14.3	42.9	117	82.6 (4x ø19.05)	316/L - 1.4401/4
43021-559	1" - 300 LBS		15.9	50.8	124	88.9 (4x ø19.05)	304/L - 1.4301/7
43021-5216	1" - 300 LBS		15.9	50.8	124	88.9 (4x ø19.05)	316/L - 1.4401/4
43021-29879	1 1/4" - 300 LBS		17.5	63.5	133	98.4 (4x ø19.05)	304/L - 1.4301/7
43021-29880	1 1/4" - 300 LBS		17.5	63.5	133	98.4 (4x ø19.05)	316/L - 1.4401/4
43021-9770	1 1/2" - 300 LBS		19.1	73.0	155	114.3 (4x ø22.23)	304/L - 1.4301/7
43021-4947	1 1/2" - 300 LBS		19.1	73.0	155	114.3 (4x ø22.23)	316/L - 1.4401/4
43021-8668	2" -300 LBS		20.7	92.1	165	127.0 (8x ø19.05)	304/L - 1.4301/7
43021-6232	2" -300 LBS		20.7	92.1	165	127.0 (8x ø19.05)	316/L - 1.4401/4
43021-8667		70	2	85			304/L - 1.4301/7
43021-29881	2 1/2" -300 LBS		23.9	104.8	190	149.2 (8x ø22.23)	304/L - 1.4301/7
43021-29882	2 1/2" -300 LBS		23.9	104.8	190	149.2 (8x ø22.23)	316/L - 1.4401/4
43021-12263	3" - 300 LBS		27.0	127.0	210	168.3 (8x ø22.23)	304/L - 1.4301/7
43021-5230	3" - 300 LBS		27.0	127.0	210	168.3 (8x ø22.23)	316/L - 1.4401/4
43021-27993	4" - 300 LBS		30.2	157.2	254	200.0 (8x ø22.23)	304/L - 1.4301/7
43021-9110	4" - 300 LBS		30.2	157.2	254	200.0 (8x ø22.23)	316/L - 1.4401/4
43021-29883	5" - 300 LBS		33.4	185.7	279	235.0 (8x ø22.23)	304/L - 1.4301/7
43021-29884	5" - 300 LBS		33.4	185.7	279	235.0 (8x ø22.23)	316/L - 1.4401/4
43021-19267	6" - 300 LBS		35.0	215.9	318	269.9 (12x ø22.23)	304/L - 1.4301/7
43021-5368	6" - 300 LBS		35.0	215.9	318	269.9 (12x ø22.23)	316/L - 1.4401/4
43021-27995	8" - 300 LBS		39.7	269.9	381	330.2 (12x ø25.40)	304/L - 1.4301/7
43021-9198	8" - 300 LBS		39.7	269.9	381	330.2 (12x ø25.40)	316/L - 1.4401/4
43021-29885	10" - 300 LBS		46.1	323.8	444	387.4 (16x ø28.58)	304/L - 1.4301/7
43021-11340	10" - 300 LBS		46.1	323.8	444	387.4 (16x ø28.58)	316/L - 1.4401/4

# HOLLIMEX

## STAINLESS STEEL & OTHER METALS

43021-29886	12" - 300 LBS	49.3	381.0	521	450.8 (16x ø31.75)	304/L - 1.4301/7
43021-29887	12" - 300 LBS	49.3	381.0	521	450.8 (16x ø31.75)	316/L - 1.4401/4
43021-29888	14" - 300 LBS	52.4	412.8	584	514.4 (20x ø31.75)	304/L - 1.4301/7
43021-29889	14" - 300 LBS	52.4	412.8	584	514.4 (20x ø31.75)	316/L - 1.4401/4
43021-29890	16" - 300 LBS	55.6	469.9	648	571.5 (20x ø34.93)	304/L - 1.4301/7
43021-29891	16" - 300 LBS	55.6	469.9	648	571.5 (20x ø34.93)	316/L - 1.4401/4
43021-29892	18" - 300 LBS	58.8	533.4	711	628.6 (24x ø34.93)	304/L - 1.4301/7
43021-29893	18" - 300 LBS	58.8	533.4	711	628.6 (24x ø34.93)	316/L - 1.4401/4
43021-29894	20" - 300 LBS	62.0	584.2	775	685.8 (24x ø34.93)	304/L - 1.4301/7
43021-29895	20" - 300 LBS	62.0	584.2	775	685.8 (24x ø34.93)	316/L - 1.4401/4
43021-29896	24" - 300 LBS	68.3	692.2	914	812.8 (24x ø41.28)	304/L - 1.4301/7
43021-29897	24" - 300 LBS	68.3	692.2	914	812.8 (24x ø41.28)	316/L - 1.4401/4

Kilweg 2 • 3336 LL Zwijndrecht • The Netherlands • **T:** (+)31 (0)85-0212750 • **F:** (+)31 (0)85-0212765

**E:** sales@hollimex.nl • **I:** www.hollimex.nl • **K.v.K.:** 29042925 • **BTW / VAT:** NL804201754B01

**ING Bank:** 694610194 • **IBAN:** NL02 INGB 0694 6101 94 • **BIC:** INGBNL2A

Buizen • Profielen • Staf • Platen • Appendages • Flenzen • Fittingen • Koppelingen • Vlienderkleppen • Kranen • Afsluiters • Montagemiddelen • Bewerkingen • Maatwerk