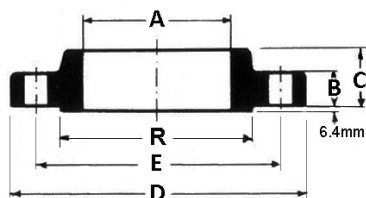


SLIP-ON FLENS - DUPLEX - ASTM A182/ANSI B16.5



Artikelcode	Afmeting	Kwaliteit
174301-41055	1/2" - 150 LBS	DUPLEX / 1.4462 / S31803 / F51
174301-41067	1/2" - 300 LBS	DUPLEX / 1.4462 / S31803 / F51
174301-41056	3/4" - 150 LBS	DUPLEX / 1.4462 / S31803 / F51
174301-41068	3/4" - 300 LBS	DUPLEX / 1.4462 / S31803 / F51
174301-41057	1" - 150 LBS	DUPLEX / 1.4462 / S31803 / F51
174301-41069	1" - 300 LBS	DUPLEX / 1.4462 / S31803 / F51
174301-41058	1 1/4" - 150 LBS	DUPLEX / 1.4462 / S31803 / F51
174301-41070	1 1/4" - 300 LBS	DUPLEX / 1.4462 / S31803 / F51
174301-41059	1 1/2" - 150 LBS	DUPLEX / 1.4462 / S31803 / F51
174301-41071	1 1/2" - 300 LBS	DUPLEX / 1.4462 / S31803 / F51
174301-10413	1 1/2" - 600 LBS	DUPLEX / 1.4462 / S31803 / F51
174301-41060	2" - 150 LBS	DUPLEX / 1.4462 / S31803 / F51
174301-41072	2" - 300 LBS	DUPLEX / 1.4462 / S31803 / F51
174301-41061	2 1/2" - 150 LBS	DUPLEX / 1.4462 / S31803 / F51
174301-28550	2 1/2" - 300 LBS	DUPLEX / 1.4462 / S31803 / F51
174301-41062	3" - 150 LBS	DUPLEX / 1.4462 / S31803 / F51
174301-41073	3" - 300 LBS	DUPLEX / 1.4462 / S31803 / F51
174301-41063	3 1/2" - 150 LBS	DUPLEX / 1.4462 / S31803 / F51
174301-41074	3 1/2" - 300 LBS	DUPLEX / 1.4462 / S31803 / F51
174301-41064	4" - 150 LBS	DUPLEX / 1.4462 / S31803 / F51
174301-41075	4" - 300 LBS	DUPLEX / 1.4462 / S31803 / F51
174301-41065	5" - 150 LBS	DUPLEX / 1.4462 / S31803 / F51
174301-41076	5" - 300 LBS	DUPLEX / 1.4462 / S31803 / F51
174301-41066	6" - 150 LBS	DUPLEX / 1.4462 / S31803 / F51
174301-41077	6" - 300 LBS	DUPLEX / 1.4462 / S31803 / F51
174301-25987	8" - 150 LBS	DUPLEX / 1.4462 / S31803 / F51
174301-41078	8" - 300 LBS	DUPLEX / 1.4462 / S31803 / F51



HOLLIMEX

STAINLESS STEEL & OTHER METALS

174301-25988

12" - 150 LBS

DUPLEX / 1.4462 / S31803 / F51

Kilweg 2 • 3336 LL Zwijndrecht • The Netherlands • **T:** (+)31 (0)85-0212750 • **F:** (+)31 (0)85-0212765

E: sales@hollimex.nl • **I:** www.hollimex.nl • **K.v.K.:** 29042925 • **BTW / VAT:** NL804201754B01

ING Bank: 694610194 • **IBAN:** NL02 INGB 0694 6101 94 • **BIC:** INGBNL2A

Buizen • Profielen • Staf • Platen • Appendages • Flenzen • Fittingen • Koppelingen • Vlienderkleppen • Kranen • Afsluiters • Montagemiddelen • Bewerkingen • Maatwerk